

Krokbragd on the Side

by Karen Madigan

In 'turning' a draft the threading becomes the treading and the treading becomes the threading.'turning' is literally turning a draft plan around by 90 degrees.

HOW TO MODIFY THE INKLE LOOM

The inkle loom is a two shaft loom and needs to be modified to accommodate this three shaft technique.

The normal warping sequence is one fixed heddle thread alternating with an open, floating thread. Here a *third* open floating thread is added. As both of the open threads need to be independently operated they are attached to auxiliary heddles.

Following the colour order of the pattern draft, (diagram 1) warp the loom using one heddle thread followed by two open threads.

After warping is complete the auxiliary heddles are attached. The same heddles normally used on your inkle loom can be used. Loop a heddle around each of the first open threads and place them

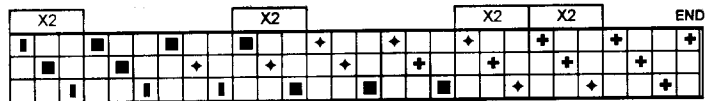
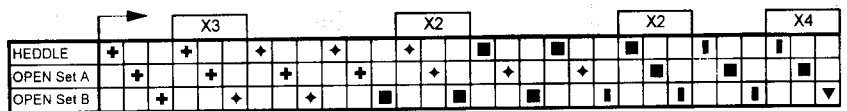
Experienced weavers will be familiar with the three shaft, *weft faced* weave called Krokbragd. This Norwegian weave uses several coloured wefts to produce a highly patterned textile often used in rugs.

The basis for its rich patterning is colour and the combination of colours chosen will greatly affect its look. With this in mind, this three shaft pattern can be 'turned' to make a warp faced pattern requiring only one shuttle of weft.

All of the colour changes will now be in the warp. This is simple on a four shaft loom, see page 5, but the inkle loom can be easily modified to weave these patterns and provides a quick introduction and sampling device into the technique.

Krokbragd looks like a four shaft weave on one side but floats over three picks on the other.

KROKBRAGD PATTERN DRAFT



- Colour Key
- + Colour 1
 - ◊ Colour 2
 - Colour 3
 - ▣ Colour 4
 - ▼ Colour 5

DIAGRAM 1:
Traditional Krokbragd pattern draft.

on a large safety pin. Diagram 2.

This will make it easy to lift the heddles. This set will be referred to as SET A.

Next, loop a heddle around each of the second open threads and again attach them to a safety pin. These will be SET B.

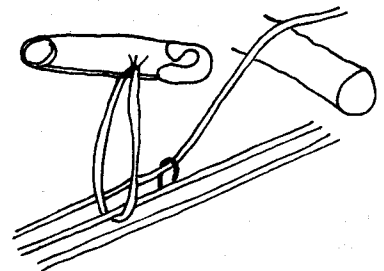
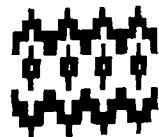
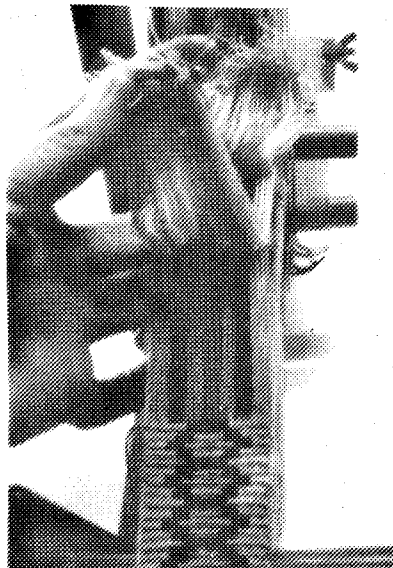


DIAGRAM 2:
Loop a heddle around each of the first open threads.



**'Turning' Krokbragd
transforms a weft faced
weave to a warp faced
weave.**



Now the loom is set up to independently lift three sheds or combinations of these. Diagram 3.

TO WEAVE

For this sample there are three sheds as follows:

- 1) Push all of the floating threads down as in a normal down shed.
- 2) Lift SET A heddles.
- 3) Lift SET B heddles.

SINGLE KROKBRAGD

To weave single Krokbragd use the weaving sequence 1,2,1,3 repeat. Beat the weft firmly after each row. Diagram 4.

DOUBLE KROKBRAGD

To weave double Krokbragd use the sequence 3,1,3,1,2,1,2,1 repeat.

NOTE: Pellicano Perle Cotton (5/2) was used in this Krokbragd sample.

**FOUR SHAFT LOOM PATTERNS FOR
WARP FACED KROKBRAGD**

		X3			X2			X2			X4	X2			X2		X2	X2	
COLOUR 1	3	2	1	1											1		1	2	3
COLOUR 2			1	2	2	1	1							1	1	2	1	1	1
COLOUR 3					1	1	2	2	1	1	1	2	1	1	1	1	1		
COLOUR 4								1	1	1	1	1	1	1					
COLOUR 5											1								

COLOUR ORDER FOR FOUR SHAFT LOOM

DIAGRAM 3:

The set up of the loom, with 2 sets of auxiliary heddles.

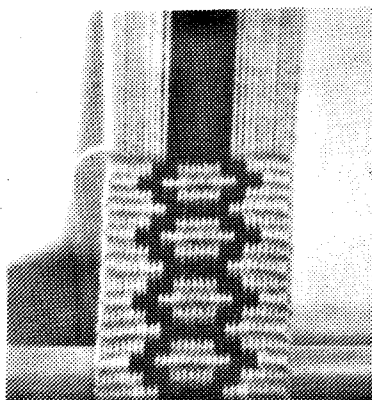


DIAGRAM 4:

Single warp faced krokbragd



Pattern draft for single warp faced Krokbragd.



Pattern draft for double warp faced krokbragd.

© Karen Madigan 1996

References:

Anne Dixon, 1995, *The Inkle Loom - Think 90 Degrees, Strands*, Published by The Braid Society, Leicester.

Jane Patrick, (Ed.) *Handwoven Treasury*, 1989, Interweave Press, Colorado.